



# COVID-19 Precautions March 2022

---

## Screening

- All people who will present at ART on a given day need to screen

## Testing

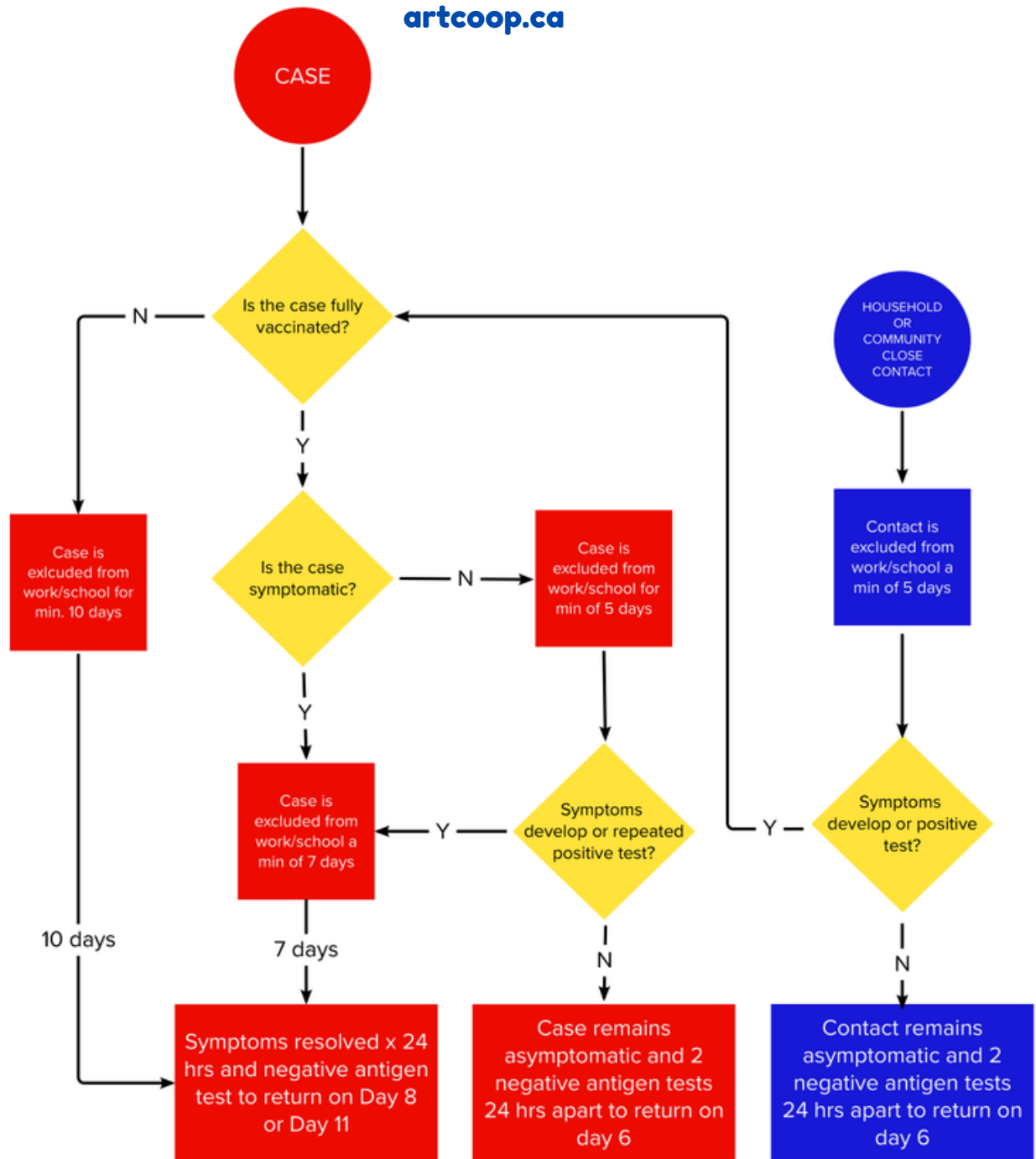
- Anyone attending at ART, whether staff or children, need to test on the day they are attending - that means staff and any fulltime children would test every weekday
- Household members should test 3x week - Sun/Tue/Thu or Mon/Wed/Fri (has to be in the morning if on a MWF schedule)
- Non-household members who regularly interact as part of your bubble should be invited to test 3x week or prior to interaction with the household if they are seen infrequently
- Point in time, or infrequent testing, should be 2 tests, 24 hrs apart prior to interaction

## Masking

- Masks, preferably KN95 or equivalent, need to be worn in the ART facility at all times unless eating/drinking or in the case of a child needing a brief break
- Mask-off time needs to include significant distancing (different rooms) if people from different households are unmasked at the same time
  - snacks and lunch can be handled by cohorting children into different rooms based on their household and eating at the same time OR staggering times by household

## Air Filtration & Ventilation

- All rooms in ART have a portable HEPA filter
- Filters need to be running on high through the whole day - turned on first thing with opening and off last thing with closing to provide some air clearing prior to and after the children are in the space
- The furnace fan should be on continuously
- Bathroom fans should be on continuously during the school day



**NOTE:** If the **case** was onsite in the 48 hours prior to the positive test, the following guidelines apply:

- If an asymptomatic **staff member** and there has been no PPE breach, school can remain open, provided there are no additional cases or instances of staff or children developing symptoms in the following 7 days. If a **second case presents** or if staff or children develop **COVID-like symptoms**, the school will close for a minimum of 5 days from the date of the 2nd instance.
- If a **child**, school will close for a min of 5 days.
- Re-opening will require 5 consecutive days with no positive tests and no symptoms in the cohort.

**Fully vaccinated** is defined as having had all doses for which they are eligible

**Close contact** is defined as more than 15 minutes in a shared space with a case with no masks

These precautions are based on current understandings of risk and may change in the future



# COVID-19 Precautions FAQ

---

## Screening

### How often do we need to complete screening?

- Screening needs to be completed once a day prior to entering ART - if you aren't attending on a given day, you do not need to screen

### How do I access the screening questions?

- Use the screening option in [Hi Mama](#) for any children attending that day
- Staff and volunteers use the [JotForm screening tool](#)

## Testing & Isolation

### I am seeing things in social media about testing in the throat first and then the nose - should we be doing this?

- There is growing evidence that Omicron will show up in the throat and not the nose, if tolerated, please do swab near the back of cheek/throat and then the nose

### What do we do if someone tests positive?

- If someone tests positive, please immediately alert the Director. The ART Board or Director will be in touch to confirm isolation timelines.

### What do we do if someone develops symptoms but tests negative on our home tests?

- Contact the Director to let them know your child won't be attending and to discuss next steps

### Why are your isolation requirements longer/different than the public health order?

- Due to the risk presented to our families, our requirements are more stringent than the general public guidance

## Masking

### Does the masking policy mean my child might eat alone?

- If your child is not attending with a sibling, they will be the only one with a mask off at any given time, so they may not be alone, but they will be the only one eating

### What if my child won't wear a KN95 or equivalent?

- Staff will work to try and move your child to a KN95, in the meantime, they need to wear the next best option
  - best: KN95
  - good: medical or cloth with filter
  - fair: cloth