



Infection Control Precautions - April 2024

Screening

- All people who will present at ART on a given day need to screen for symptoms.

Masking

- Masks, KN94/equivalent or better, are strongly encouraged for all children and required for adults.
- Staff can help with your children learning how to mask and may suggest alternative mask brands if fit is challenging.
- During periods of lower community transmission, ART may (with board and parental approval) de-escalate masking starting with outdoors.

Air Filtration & Ventilation

- All rooms in ART have a portable HEPA filter.
- Filters need to be running on high through the whole day - turned on first thing with opening and off last thing with closing to provide some air clearing prior to and after the children are in the space.
- The furnace fan should be on continuously.
- Bathroom fans should be on continuously during the school day.

Testing

- While tests have been harder to access and, in some cases, expired, ART has a large stock of recently expired tests from the Red Cross.
- Staff will provide you with tests on request and we recommend you always have enough on hand to manage testing through a period of symptomatic illness (see attached algorithm).
- We know that the tests have been found to be less reliable in confirming the absence of COVID, but are still highly reliable if they show a positive result.

Cohorting

- We will use cohorting during meal times to reduce chance of spread - e.g. if your child returns after being symptomatic or is attending while someone in the household is symptomatic, they may be cohorted in a separate space for mask off times (meals & snacks) for a period of time - see illness policies for current protocol.
- Children who attend ART should not be attending other daycares, childcare centres, day homes or in-person school

Infection Control Precautions FAQ

Screening

How often do we need to complete screening?

- Screening needs to be completed once a day prior to entering ART - if you aren't attending on a given day, you do not need to screen.

What do we do if someone develops symptoms?

- If anyone in your household develops symptoms and the staff member or child was at ART in the previous 48 hrs, contact the Director to let them know.
- Begin testing daily until symptoms resolve, then test 2 more times, 24 hrs apart.

Masking

Why do you require/encourage masking?

- Masking adds an extra layer of protection and we ask that all who can wear masks, do.

What if my child won't wear a KN94 or equivalent?

- We have options for masks, including cloth, that can be better than nothing in high-risk periods
- While we encourage all to wear masks, we support an inclusive environment that includes children who can't mask.

What if I can't afford higher quality masks?

- ART has a stock of children's KN94 masks that you can use if finances are a barrier, please speak with the staff to access them.

Testing

Are Rapid Tests even effective anymore? Why do we need to test at all?

- Evidence is showing that as COVID evolves and the tests expire, rapid tests are less reliable at picking up an infection (high likelihood of false negatives), but still reliable when they do (low likelihood of false positives), i.e. we can trust a positive, but not a negative.
- Knowing if someone has COVID, when we can, helps us take extra precautions.

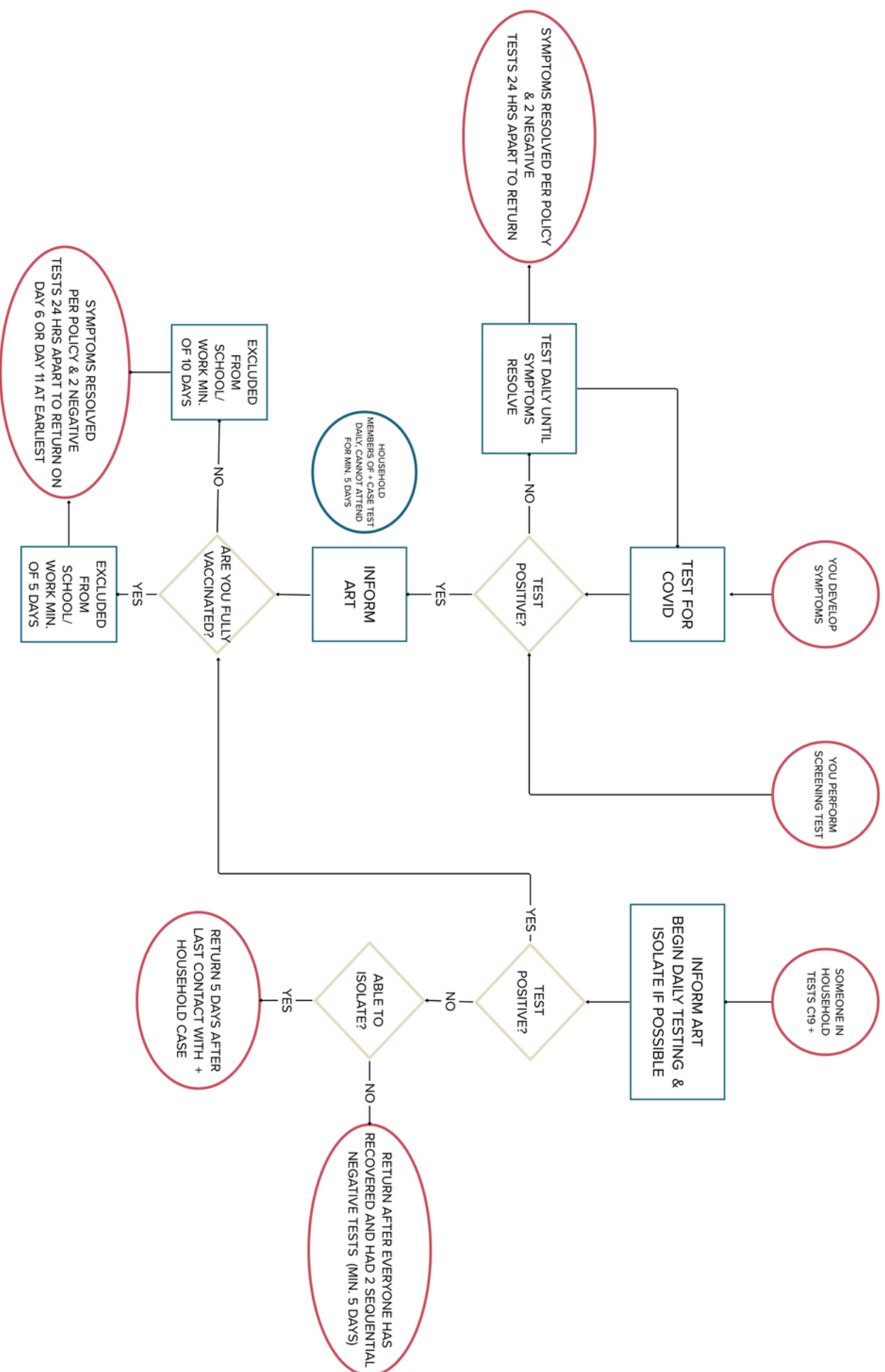
I have read about testing in the throat first and then the nose - should we be doing this?

- There is growing evidence that coronavirus will show up in the throat and not the nose; if tolerated, please do swab the inside of both cheeks and the back of throat and then both nostrils.

What do we do if someone tests positive?

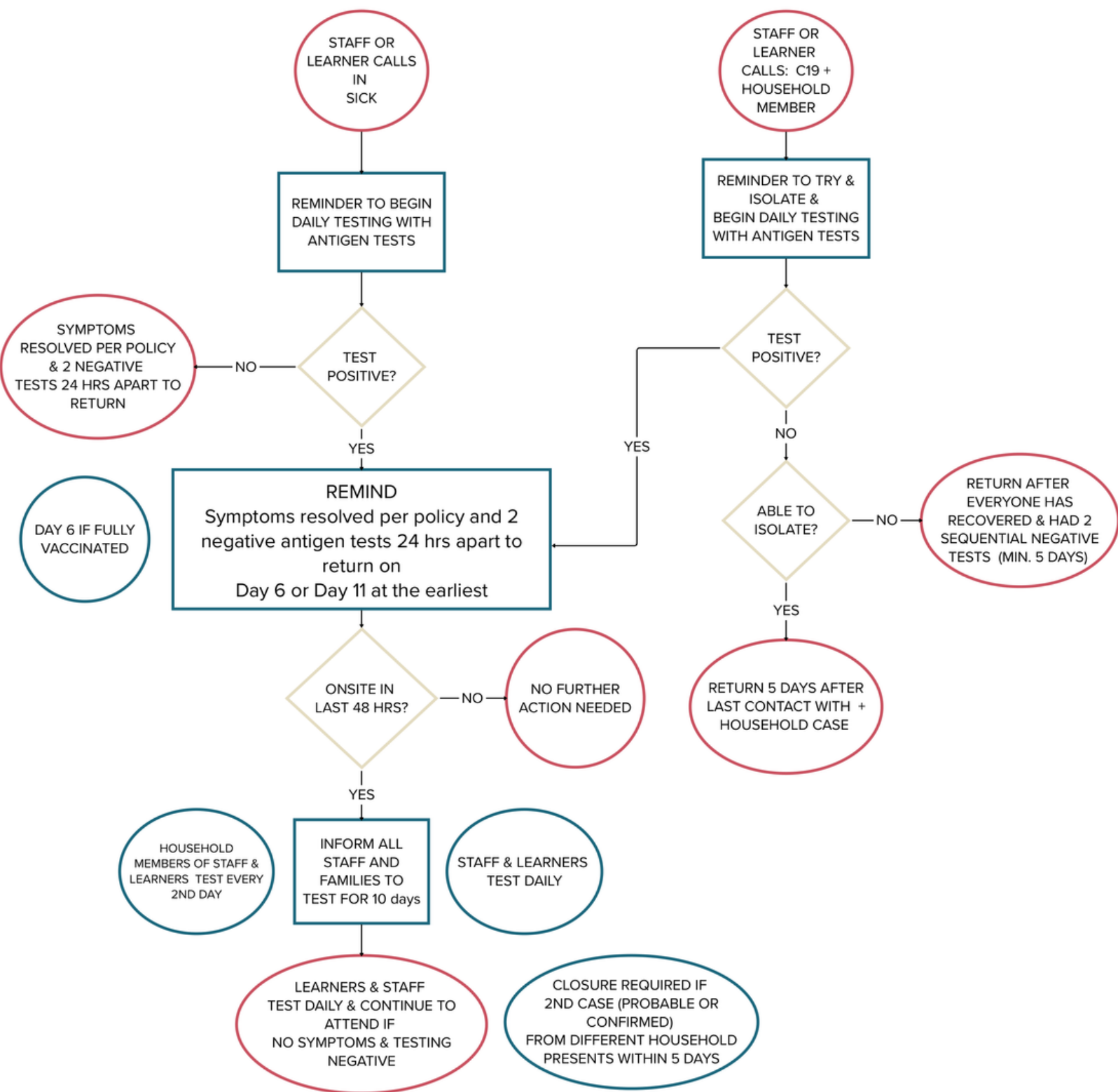
- Immediately alert the Director.
- All contacts in the household should test daily & the person with COVID should isolate if possible
- If the person with COVID is living in your household, you would not be able to return for at least 5 days.
 - If you are able to isolate than you can return 5 days after last contact with a positive household case;
 - if you cannot isolate you can return provided everyone has recovered and you have two sequential negative tests.
- The person with COVID can return on Day 6 (fully vaccinated) or Day 11 (not fully vaccinated) provided they are asymptomatic with no medications for 48 hrs (child) or 24 hrs (staff) and have 2 negative tests, 24 hrs apart.

ART COVID-19 TESTING ALGORITHM



Fully vaccinated is defined as having had all doses for which you are eligible

ART RESPONSE ALGORITHM



Fully vaccinated is defined as having had all doses for which you are eligible

NOTE: If the **COVID-19 positive case** was onsite in the 48 hours prior to the positive test and a second confirmed (positive test) or probable (symptoms) case presents in a different household within 5 days of last contact, the school will close for a minimum of 5 days from the date of the 2nd instance. Re-opening will require 5 consecutive days with no positive tests and no symptoms in the cohort.